



American Heart Association®

Teaching Gardens®

Teaching Garden Equipment and Supplies

These are the basic tools and supplies you will need to start your garden.

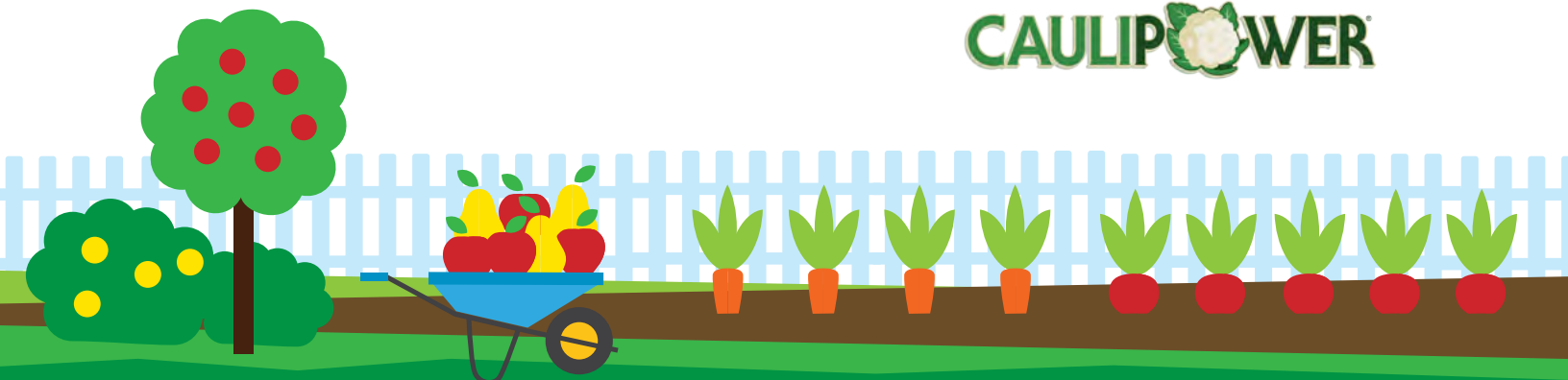
- Shovels
- Rakes
- Hoses
- Nozzles
- Painter's buckets
- Hand trowels
- Hand tines
- Clippers
- Gloves

A local garden supply business may donate tools. Many schools have found garden tools at local flea markets and garage sales. You may wish to solicit donations from parents or local community members. Some schools have had success using sites such as Freecycle, a network connecting people who have a need with people who have an item to give away. Visit freecycle.org to find a group in your area. Consider borrowing equipment you may only need once (such as a wheelbarrow).



Proud Sponsor of the American Heart Association's
Teaching Gardens Network

CAULIP[®]OWER





American Heart Association®

Teaching Gardens®

Lumber and Other Building Supplies

Approach a local lumber company about providing materials or offering a discount on materials for fencing, raised beds or a tool shed. A parent may have the skills needed to design these elements and/or lead a volunteer work party in construction of the beds.

Seeds and Plants

Seeds are an ongoing need for a school garden. Many seed companies are happy to give away expired seeds, and most seeds are still viable for a year after they expire. Some are viable for many years. Initiate a letter-writing campaign with your students to contact seed companies requesting donations.

Sometimes you will want to acquire plants for your garden instead of sowing seeds yourself. Home gardeners in the area may be delighted to pass on divisions of their perennials; garden centers may be willing to donate seedlings.

Compost

Check with your local waste management department. Green waste is often composted and distributed for free or at a low cost. Parents or community members may wish to donate compost as well. Mulch, in the form of wood chips, may also be available.

