

HEALTH SCREENING SERVICES™

Administered by a Licensed Laboratory Services Provider



Life's Simple 7 Journey to Health™

Science Based • Evidence Informed

Take the Integrated Health Assessment
My Life Check® Enhance

Select a Health Screening

Onsite Laboratory Provider Pharmacy



Know Your Numbers

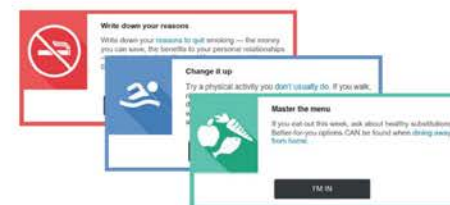
Workplace Health Achievement Index

Science-based performance measures
Pre-populated aggregate data reporting



Incentive Management • Data Analytics

Benefit from Health Actions
Consumer activation and engagement
35 actions to help improve health



Overall Health Improvement



HEALTH SCREENING SERVICES™

Administered by a Licensed Laboratory Services Provider



It's never too late to make better health choices.
We know that even simple, small changes can make a big difference in living healthier.

Scheduling Tool

Pricing model: no site minimums and fully bundled pricing
Retail pharmacy voucher program and LabCorp voucher program
Staffing model: always send extra staff (3:1 ratio) and no agencies
Flexible implementation
Transmit results to multiple parties
Types: onsite, PCP, lab, retail Rx, home test kit

My Life Check Enhance Health Assessment

Science-based Life's Simple 7 health assessment tool
Pre-populated lab values from screenings
Health actions provided to Focus and Improve health in needed areas as identified by the assessment

Biometric Screenings

Highly customizable online registration experience
Online HIPAA authorization
Communication engine to drive participation
ADA compliant



Interactive Online Reporting

Point & click functionality with interactive map
Cohort analysis (year over year analysis of population health change)
Evaluation of specific wellness programs
Age, gender, and employee classification-specific views
Import historical biometrics, program participation and claims data

Incentive Management

Incentive tracking: participation-based, percent improvement, progress-based, Appeals handling
System flexibility: thresholds, test menu, activity based
Intuitive work flow & incentive scorecard