



## Kidney Health in Type 2 Diabetes

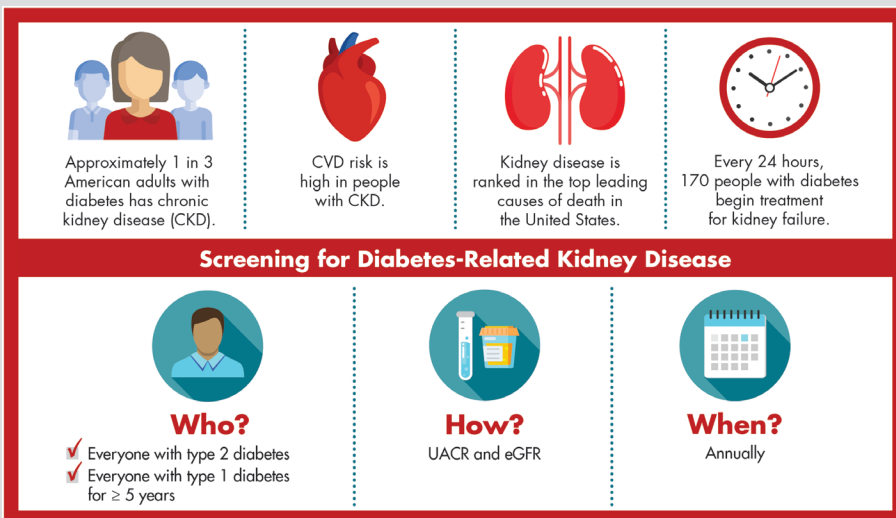
Kidney health is extremely important for patients with Type 2 diabetes (T2D) because of their increased risk of kidney disease. This guide is intended to help health care organizations understand proper screening protocols for kidney disease in those with Type 2 diabetes. Additionally, Target: Type 2 Diabetes<sup>SM</sup> encourages organizations to follow these screening recommendations.



### Does Your Organization Conduct Annual Testing for:

- eGFR
- uACR

Reference the [ADA Standards of Care in Diabetes](#) for comprehensive recommendations for management in patients with diabetes.



**Graphic:** Understanding kidney disease management in diabetes



**Consensus Report:** Joint report from American Diabetes Association (ADA) & Kidney Disease Improving Global Outcomes (KDIGO)



**Guide:** Understanding the top 5 treatment recommendations in CKD



**Podcast:** Identifying and managing renal complications in patients with T2D and CVD



**Webinar:** CKD in T2D and how it contributes to CVD



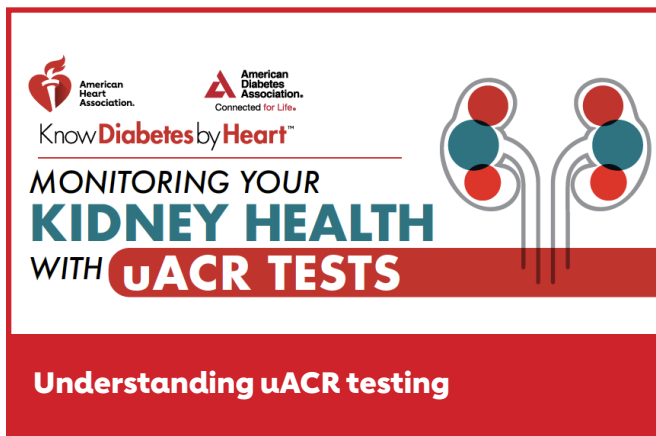
**Webinar:** ADA Scientific Sessions CVD and T2D latest research



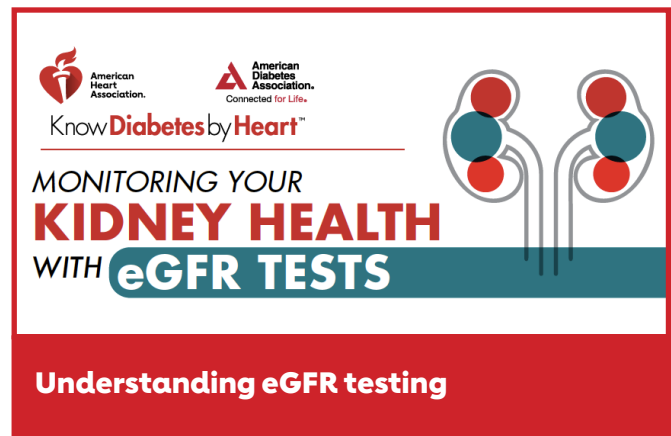
**Video:** Understanding kidney health assessment with “Classification of Chronic Kidney Disease” chart

## For Your Patients

Use these resources to help your patients better understand how to protect their kidney health.



American Heart Association logo and American Diabetes Association logo (Connected for Life) are in the top left. The text "Know Diabetes by Heart™" is in the top center. On the right is a stylized illustration of two kidneys. The main text reads "MONITORING YOUR KIDNEY HEALTH WITH uACR TESTS". A red bar at the bottom contains the text "Understanding uACR testing".



American Heart Association logo and American Diabetes Association logo (Connected for Life) are in the top left. The text "Know Diabetes by Heart™" is in the top center. On the right is a stylized illustration of two kidneys. The main text reads "MONITORING YOUR KIDNEY HEALTH WITH eGFR TESTS". A red bar at the bottom contains the text "Understanding eGFR testing".



**Video:** Ask The Experts, Q & A on kidney disease and diabetes



**Video:** Understanding diabetes and CKD



**Article:** Preventing kidney disease before it starts



**Article:** Understanding the connection between diabetes and kidney and heart health



**Article:** How to discuss kidney health with your health care provider

## Additional Resources:

**American Kidney Fund:** [www.kidneyfund.org](http://www.kidneyfund.org)

**National Kidney Foundation:** [www.kidney.org](http://www.kidney.org)

[heart.org/OutpaceCVD](http://heart.org/OutpaceCVD)