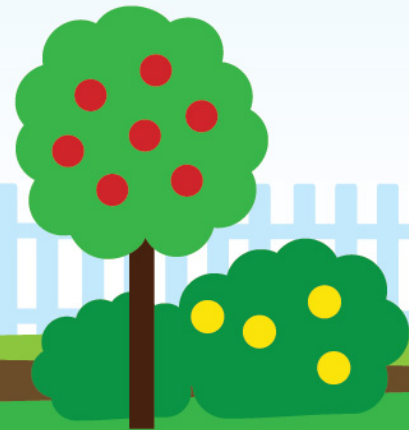
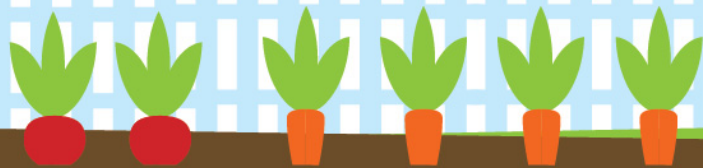




American Heart Association®

Teaching Gardens®

# TEACHING GARDENS EVALUATION





American Heart Association.

Teaching Gardens®

## Teaching Gardens Evaluation

### Purpose

The Teaching Gardens Evaluation is tool to record the different stages in the Teaching Gardens cycle. The document fulfills multiple purposes. It serves as a teaching and recording tool, an informative process evaluation tool and a summary to the funder to showcase the use of the donation.

It is to be completed by the Garden Champion assigned by the school. A copy of the evaluation may be provided to funders, volunteers or community members to showcase your work. You may add, edit or delete pages as needed. Additionally, you may wish to attach photos and any video links when you share the evaluation with others.

It has been divided into three main sections:

- Pre-planning stage
- Planting stage
- Post-harvest stage



## Teaching Gardens Evaluation

### Stage 1: Pre-Planning

#### Participants:

---

---

---

---

---

---

---

---

---

---

#### Agenda:

---

---

---

---

---

---

---

---

---

---

#### Total number of meetings:

---

---

---

---

---

---

---

---

---

---





Planting 1: Plant Day

Participant grade level: \_\_\_\_\_ Number of children participating: \_\_\_\_\_

Specific subjects covered:

---

---

---

Specific lesson plans used:

---

---

---

Lesson plan created:

Author: \_\_\_\_\_

Audience: \_\_\_\_\_

Specifics:

---

---

---

---

---

---

---

---

---

---

Teacher feedback:

---

---

---

---

---

---



Student feedback:

---

---

---

---

---

---

Challenges faced:

---

---

---

---

---

---

Lessons learned:

---

---

---

---

---

---

Volunteers:

Name	Role	Hours spent
------	------	-------------

<hr/>	<hr/>	<hr/>
<hr/>	<hr/>	<hr/>
<hr/>	<hr/>	<hr/>
<hr/>	<hr/>	<hr/>
<hr/>	<hr/>	<hr/>



American Heart Association.

Teaching Gardens®

Planting 2: Germination

Participant grade level: \_\_\_\_\_ Number of children participating: \_\_\_\_\_

Specific subjects covered:

---

---

---

Specific lesson plans used:

---

---

---

Lesson plan created:

Author: \_\_\_\_\_

Audience: \_\_\_\_\_

Specifics:

---

---

---

---

---

---

---

---

---

---

---

---

Teacher feedback:

---

---

---

---

---

---



Student feedback:

---

---

---

---

---

---

Challenges faced:

---

---

---

---

---

---

Lessons learned:

---

---

---

---

---

---

Volunteers:

Name	Role	Hours spent
------	------	-------------






American Heart Association®

Teaching Gardens®

Planting 3: Growing Plants

Participant grade level: \_\_\_\_\_ Number of children participating: \_\_\_\_\_

Specific subjects covered:

---

---

---

Specific lesson plans used:

---

---

---

Lesson plan created:

Author: \_\_\_\_\_

Audience: \_\_\_\_\_

Specifics:

---

---

---

---

---

---

---

---

---

---

---

Teacher feedback:

---

---

---

---

---

---



Student feedback:

---

---

---

---

---

---

Challenges faced:

---

---

---

---

---

---

Lessons learned:

---

---

---

---

---

---

Volunteers:

Name	Role	Hours spent
------	------	-------------




Growing 4: Pest and Disease Problems

Participant grade level: \_\_\_\_\_ Number of children participating: \_\_\_\_\_

Specific subjects covered:

---

---

---

Specific lesson plans used:

---

---

---

Lesson plan created:

Author: \_\_\_\_\_

Audience: \_\_\_\_\_

Specifics:

---

---

---

---

---

---

---

---

---

---

Teacher feedback:

---

---

---

---

---



Student feedback:

---

---

---

---

---

---

Challenges faced:

---

---

---

---

---

---

Lessons learned:

---

---

---

---

---

---

Volunteers:

Name	Role	Hours spent
------	------	-------------




American Heart Association.

Teaching Gardens®

Planting 5: Flowering

Participant grade level: \_\_\_\_\_ Number of children participating: \_\_\_\_\_

Specific subjects covered:

---

---

---

Specific lesson plans used:

---

---

---

Lesson plan created:

Author: \_\_\_\_\_

Audience: \_\_\_\_\_

Specifics:

---

---

---

---

---

---

---

---

---

---

Teacher feedback:

---

---

---

---

---

---



Student feedback:

---

---

---

---

---

---

Challenges faced:

---

---

---

---

---

---

Lessons learned:

---

---

---

---

---

---

Volunteers:

Name	Role	Hours spent
------	------	-------------

<hr/>	<hr/>	<hr/>
<hr/>	<hr/>	<hr/>
<hr/>	<hr/>	<hr/>
<hr/>	<hr/>	<hr/>
<hr/>	<hr/>	<hr/>



American Heart Association.

Teaching Gardens®

Planting 6: First Sign of Vegetables

Participant grade level: \_\_\_\_\_ Number of children participating: \_\_\_\_\_

Specific subjects covered:

---

---

---

Specific lesson plans used:

---

---

---

Lesson plan created:

Author: \_\_\_\_\_

Audience: \_\_\_\_\_

Specifics:

---

---

---

---

---

---

---

---

---

---

Teacher feedback:

---

---

---

---

---



Student feedback:

---

---

---

---

---

---

Challenges faced:

---

---

---

---

---

---

Lessons learned:

---

---

---

---

---

---

Volunteers:

Name	Role	Hours spent
------	------	-------------






Planting 7: Harvest

Participant grade level: \_\_\_\_\_ Number of children participating: \_\_\_\_\_

Specific subjects covered:

---

---

---

Specific lesson plans used:

---

---

---

Lesson plan created:

Author: \_\_\_\_\_

Audience: \_\_\_\_\_

Specifics:

---

---

---

---

---

---

---

---

---

---

---

Teacher feedback:

---

---

---

---

---

---



Student feedback:

---

---

---

---

---

---

Challenges faced:

---

---

---

---

---

---

Lessons learned:

---

---

---

---

---

---

Volunteers:

Name	Role	Hours spent
------	------	-------------




American Heart Association.

Teaching Gardens®

Planting 8: Produce Details

Participant grade level: \_\_\_\_\_ Number of children participating: \_\_\_\_\_

Specific subjects covered:

---

---

---

Specific lesson plans used:

---

---

---

Lesson plan created:

Author: \_\_\_\_\_

Audience: \_\_\_\_\_

Specifics:

---

---

---

---

---

---

---

---

---

---

Teacher feedback:

---

---

---

---

---

---





