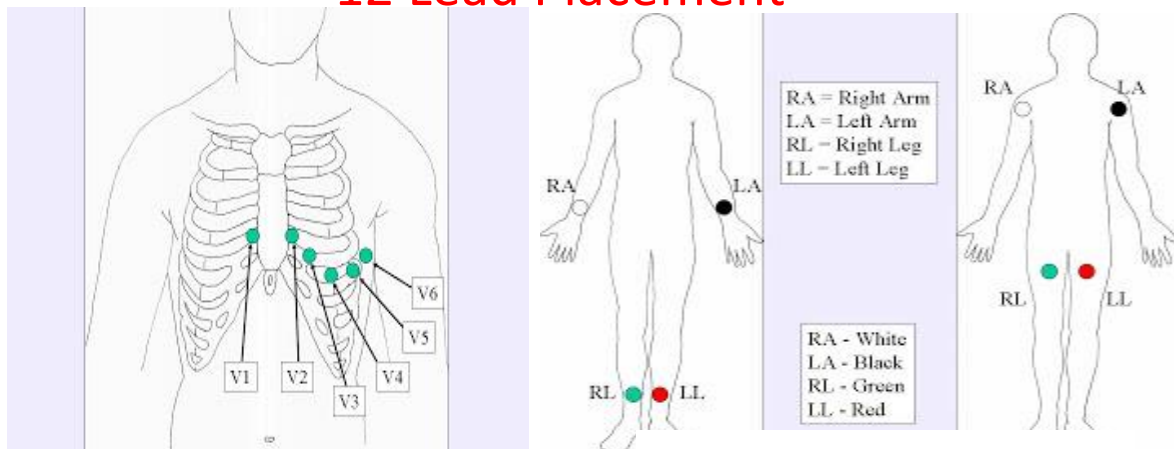


12 Lead Placement










Limb Leads Go on the Limbs

ECG TRANSMISSION

- SUSPECTED ACUTE CORONARY SYNDROME (ACS)?
- ACQUIRE A 12 LEAD & TRANSMIT FOR ALL PATIENTS WITH PAIN OR DISCOMFORT BETWEEN THE CHIN AND PELVIS
- CALL RECEIVING HOSPITAL TO CONFIRM RECEIPT OF TRANSMISSION
- TRANSMIT WITHOUT DELAY
- GOAL TO HAVE PATIENT TREATED WITH LYTIC THERAPY WITHIN 30 MINUTES OF ENTERING EMERGENCY

X Series® 12 Lead Transmission Instructions

1. Power on the ZOLL X-Series monitor by pressing Power On/Off button 
2. Press the 12 Lead soft key 
3. Press the "Acquire" soft key 
4. Use the navigation keys to enter patient Age and Sex 
5. Once acquired the unit will print a paper copy and the Transmit soft key will activate
Press the Transmit soft key and a list of destinations will appear 
6. Using the navigation keys, select the appropriate destination from the list. A green check will appear next to selected destination 
7. Using the navigation keys, scroll down to "Transmit" icon and select 
8. Once "Transmit" has been selected, the green LED light on the top left of the device will illuminate and the message **TRANSMITTING** will appear in the top left corner of the screen
9. Once transmission is completed, the green LED light will turn off, and the message **TRANSMISSION COMPLETE** will appear in the top left corner of the screen