



POSITIONS FOR SIX-PERSON HIGH-QUALITY CPR TEAMS

Resuscitation Triangle Roles

POSITION 1
COMPRESSOR

- Assesses patient
- Does 5 cycles of chest compressions
- Rotates clockwise with Position 2 every 5 cycles

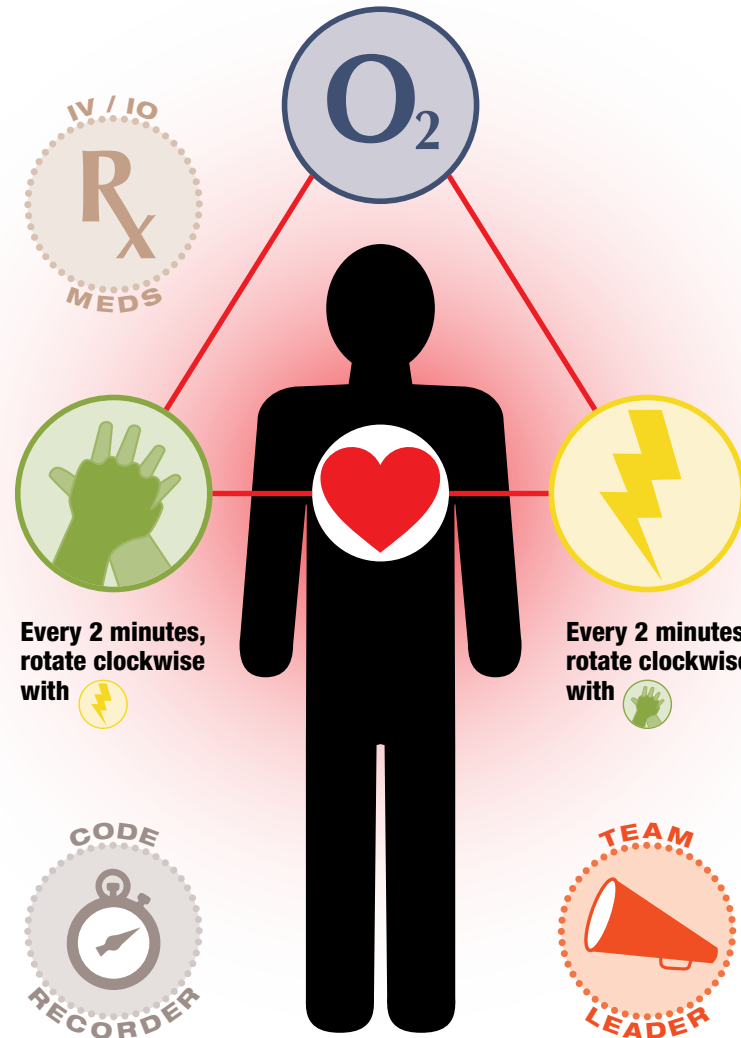
POSITION 2
AED/MONITOR / DEFIBRILLATOR

- Brings and operates AED/Monitor / Defibrillator
- Rotates clockwise with the Compressor every 5 cycles while AED/Monitor is analyzing rhythm
- If a monitor is present, place it in a position where it can be seen by entire team

POSITION 3
AIRWAY

- Opens airway;
- Provides bag-mask ventilation
- Inserts airway adjuncts as appropriate

The team owns the code. No member leaves the triangle except to protect their safety



Leadership Roles

POSITION 4
TEAM LEADER

- Every resuscitation team must have a defined leader
- Assigns roles to team members
- Makes treatment decisions
- Provides feedback to the rest of the team as needed

POSITION 5
CODE RECORDER

- Records time of interventions and medications
- Records frequency and duration of interruptions in compressions
- Communicates these to the Team Leader

POSITION 6
IV/IO / MEDS

- This is an ACLS provider role
- Initiates IV/IO access
- Administers medications